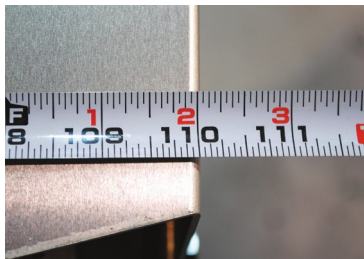




IRON MAN

Junior 5/6" Seamless Rollformer



Only 110" long—and over 25% lighter
in weight than the Iron Man 5/6".



Polyurethane Drive Train

- Eliminates the need to load coil prior to transportation (less material waste)
- Eliminates slippage from cold weather and condensation

.002 Hard Chrome Plated Steel Forming Rollers

- Rollforms all recommended materials with minimal or no adjustment
- Free-floating forming rollers produce less pressure and allow for more product uniformity

Electrical and Control System

- Push button entry and exit end controls with safety wiring and "jog" feature
- 3/4 HP, 110 volt, single phase motor, 11 ampere

Structural Steel Frame

- Welded tubular frame

Modular Turnstile Upright System & Transfer Bars

- Transfer bars (ease of coil loading)

ROCK SOLID GUARANTEE:

3-YEARS Parts & Labor/Mechanical

• 1-YEAR Parts & Labor/Electrical

www.GutterSupply.com

935 Campus Dr., Mundelein, IL 60060 ■ E-mail sales@guttersupply.com

Phone (847) 283-0006 ■ Toll-free (888) 909-RAIN





Junior 5/6" Seamless Rollformer

SPECIFICATIONS

<p>Power</p> <p>3/4 HP, 110 volt, single phase, 11 ampere, totally enclosed fan cooled (T.E.F.C.) motor</p>	<p>Dimensions</p> <p>Length – 110" (279.4 cm) Height – 48" (122.0 cm) Width – 30.5" (77.5 cm)</p>					
<p>Weight</p> <p>Approximately 1,127 lbs. (512.3 kg)</p>	<p>Drive</p> <p>Powered polyurethane drive rollers via chains and sprockets</p>					
<p>Shear</p> <p>Front pull guillotine</p>	<p>Speed</p> <p>Approximately 35 feet per minute</p>					
<p>Controls</p> <p>Push button entry and exit end controls with "jog" feature</p>	<p>Options</p> <ul style="list-style-type: none"> • Machine mount cradles • Additional runout support stands • Smart Machine (automated length control) • CE Certified wiring • Additional turnstiles • Additional spools • 12 volt, DC power • Trailer riser pad 					
<p>Recommended Materials</p> <p>Maximum width 5" – 11 3/4" to 12" Maximum width 6" – 15"</p> <table border="0"> <tr> <td>Material</td> <td>Maximum gauge</td> </tr> <tr> <td>Aluminum</td> <td>.032</td> </tr> <tr> <td>Copper</td> <td>16 oz.–20 oz. 3/4 hard</td> </tr> </table>		Material	Maximum gauge	Aluminum	.032	Copper
Material	Maximum gauge					
Aluminum	.032					
Copper	16 oz.–20 oz. 3/4 hard					

www.GutterSupply.com

935 Campus Dr., Mundelein, IL 60060 ■ E-mail sales@guttersupply.com

Phone (847) 283-0006 ■ Toll-free (888) 909-RAIN

