

LEAF GUARDS

LEAF GUARDS

LEAF GUARDS

LEAF GUARDS

LEAF GUARDS

6" 1/2 RND
COPPER GUTTER



your complete source for leaf guards



filter inserts



screens



hoods



hybrids

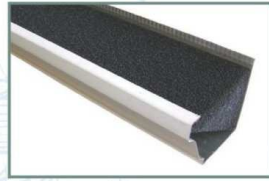


filter insert leaf guards



- **EXTREME DEFIANCE COATING:**
High-performance. Multi-polymer coating treatment provides superior protection against severe weather conditions.
- **BIOCIDE & FUNGICIDE:**
Inhibits growth of mold, mildew, fungus, algae and moss.
- **ELIMINATES MOSQUITO BREEDING**
- **UV STABILIZER:**
Prevents degradation from the sun.
- **FIRE RETARDANT**
- **EASY INSTALLATION:**
No Hardware Needed. Simply slide under existing gutter hangers.
- **20-YEAR NO CLOG WARRANTY.**

An absolutely worry-free, maintenance free,
"GUARANTEED" gutter protection system!



K STYLE GUTTER FILTER – 5" x 48", 6" x 48"

MATERIALS: 5"K & 6"K – Multi-polymer
Thermally Fused Filter
Compatible with all metals

DESCRIPTION: Water is the only substance that gets through the filter. Leaves and debris slide off the heavily treated surface or just dry up and blow away.



HALF ROUND GUTTER FILTER – 5" x 48", 6" x 48"

MATERIALS: 5"HR & 6"HR – Multi-polymer
Thermally Fused Filter
Compatible with all metals

DESCRIPTION: Regardless of your roof pitch, this system handles the most water intake of any system in the industry.



CUSTOM SIZED GUTTER FILTER

MATERIALS: Custom Sizes – Multi-polymer
Thermally Fused Filter
Compatible with all metals

DESCRIPTION: Filter Inserts can be custom-made for any size and shape of gutter. Minimum orders do apply.

screen leaf guards

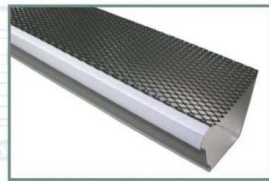


Gutter screens are available in:

- Aluminum
- Galvanized Steel
- Copper
- PVC

Screens with hinges allow for quick and easy cleaning.

Simple to install, cost-efficient and effective.



K STYLE LOCK-ON SCREEN – 5" x 48", 6" x 48"

MATERIALS: 5"K & 6"K – Painted Steel (Black),
Compatible with Aluminum and Steel

DESCRIPTION: The Lock-On screen is made from heavy gauge steel and has a unique crimped edge which locks directly on to the gutter lip. Our most durable metal screen.



K STYLE HINGED SCREEN – 5" x 36", 6" x 36"

MATERIALS: 5"K & 6"K – Aluminum, Copper, Galvanized Steel

DESCRIPTION: Each 3 foot section comes with 2 stainless steel clips that clamp on to the front bead of the gutter. Screens simply rest on roof and hinges open for easy cleaning.



K STYLE DROP-IN SCREEN – 5" x 36", 6" x 36"

MATERIALS: 5"K & 6"K – Aluminum and Copper

DESCRIPTION: Continuous reinforced edge clips into the front bead of the gutter. Back edge of the screen slides under the shingles.



HALF ROUND HINGED SCREEN – 5" x 36", 6" x 36"

MATERIALS: 5"HR & 6"HR – Aluminum, Copper, Galvanized Steel

DESCRIPTION: Each 3-foot section comes with 2 stainless steel clips that clamp on to the front bead of the gutter. Screens simply rest on roof and hinges open for easy cleaning.



DIAMOND PVC SNAP-IN SCREEN – 6" x 36"

MATERIALS: One size fits 5"K & 6"K – Diamond PVC in White, Brown and Black. Compatible with all metals.

DESCRIPTION: Rigid PVC design clips on to the front bead of the gutter and installs under the shingles.

Water flows through and debris stays out!



SOLID PVC GUTTER COVER – 6" x 36"

MATERIALS: One size fits 5" K & 6" K – Solid PVC in White and Clay. Compatible with all metals.

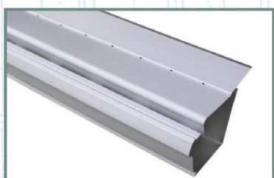
DESCRIPTION: Surface tension. Water flows around the nose of the cover and into the gutter through the slotted channel.



GUTTAGARD™ – 5" x 48", 6" x 48"

MATERIALS: 5" K & 6" K – .024" Aluminum in White, Royal Brown and Black. Copper in 6" K Only.

DESCRIPTION: Affordable hooded gutter system. No holes, no mesh, no screws, no mess! "Genius Clips" included.



FREE FLOW GUTTER GUARD – 8" x 48"

MATERIALS: One size fits 5" K & 6" K Aluminum in White, Almond, Clay, Black and Royal Brown. Also available in 12 oz. copper.

DESCRIPTION: Nose forward design allows water to follow the curve of the hood, while leaves & debris are effectively shed. Flex-bend allows system to handle the steepest slopes.

hood leaf guards



Gutter hoods work on the premise of capillary action; where the surface tension of the flow of water follows the profile of the hood.

Water flows into the gutter, while leaves and debris stay out.

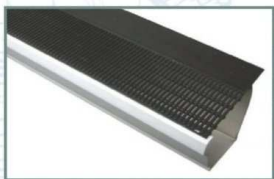
Gutter Hood meets Gutter Screen!



GUTTER SOLUTION – 5" x 46.5", 6" x 46.5"

MATERIALS: 5" K & 6" K Aluminum in White, Pearl Gray, Bronze and Royal Brown.

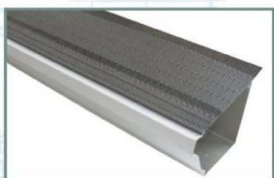
DESCRIPTION: Installs into the fascia board. The product of choice for homes with metal, shake, tile, flat and slate roofs.



RAINTRADE GUTTER GUARD – 7.5" x 36"

MATERIALS: One size fits 5"K & 6"K – Polypropylene Plastic Compatible with all metals.

DESCRIPTION: Scientifically engineered & durable. The vertical & horizontal grid keeps water in and debris out. Slides under shingles and fastens to the front lip of the gutter.



GUTTER SHINGLE – 6" x 36"

MATERIALS: One size fits 5" K & 6" K. Available in Powder Coated Steel and Copper. Powder Coat is compatible with aluminum.

DESCRIPTION: The low profile design has combined the solid cover concept with the conventional design of a mesh gutter guard. Heavy gauge steel equals strength & durability.



LEAF OUT – 5" x 48", 6" x 48"

MATERIALS: 5" K & 6" K Aluminum in White, Bronze, Wicker, Royal Brown, Ivory, Clay and Black.

DESCRIPTION: Water flows down your roof and drains through the patent-pending Aluma Flow Louver System.

hybrid leaf guards



Hybrids combine the best attributes of screens and hoods. The gutters are virtually covered; however, small openings in the top of the guard allow the water to drain through, while keeping leaves and debris out.

Low profile designs will not change the appearance of the home.

For detailed information on these products and many others, visit us online at



downspout accessories

Rainy day accessories...
For any day of the week!



SPLASHBLOCKS

MATERIALS: Made of heavyweight durable plastic. Large selection of colors and styles to choose from.

DESCRIPTION: A splashblock placed beneath the downspout elbow helps disperse water away from the foundation.



FLEX-A-SPOUT

MATERIALS: Durable, weather resistant polyethylene. Fits 2x3 or 3x4 downspout. (Green, White, Brown)

DESCRIPTION: Flex-A-Spout bends around obstacles to divert rainwater. Telescopes from 25" to 55" in length.



RAINDRAIN

MATERIALS: UV inhibited vinyl. Extends 46 inches. (Green, White, Tan, Brown)

DESCRIPTION: When it Rains it Drains. When it Shines, it Rewinds™. A rain removal system for protection against erosion.



WIRE STRAINERS

MATERIALS: Aluminum, Copper, Galvanized Steel, Stainless Steel. For 2x3, 3x4, 3" and 4" downspouts.

DESCRIPTION: Wire strainers are placed in the outlet opening of the gutter to prevent leaves and other debris from clogging downspouts and underground drainage.

Call toll-free:
888-909-RAIN

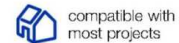
For detailed information on these products and many others, visit us online at



guttersupply.com

A division of Rain Trade Corporation

leaf guard compatibility chart



PRODUCT	K-STYLE	HALF ROUND	ASPHALT	CEDAR	SLATE/TILE	FLAT	COPPER	ALUMINUM	STEEL
Filter Insert									
Gutter Shingle									
GuttaGuard™		NO		NO	NO	NO			
Leaf Out									
Gutter Solution									
K Style Drop-In Screens		NO							
K Style Hinged Screens		NO							
Half Round Hinged Screens	NO								
Diamond PVC Snap-In		NO		NO	NO	NO			
Solid PVC Snap-In		NO		NO	NO	NO			
RainTrade Gutter Guard									
Lock-On Gutter Screen		NO		NO	NO		NO		
Free Flow Gutter Guard		NO							